



Leduc Property Overview

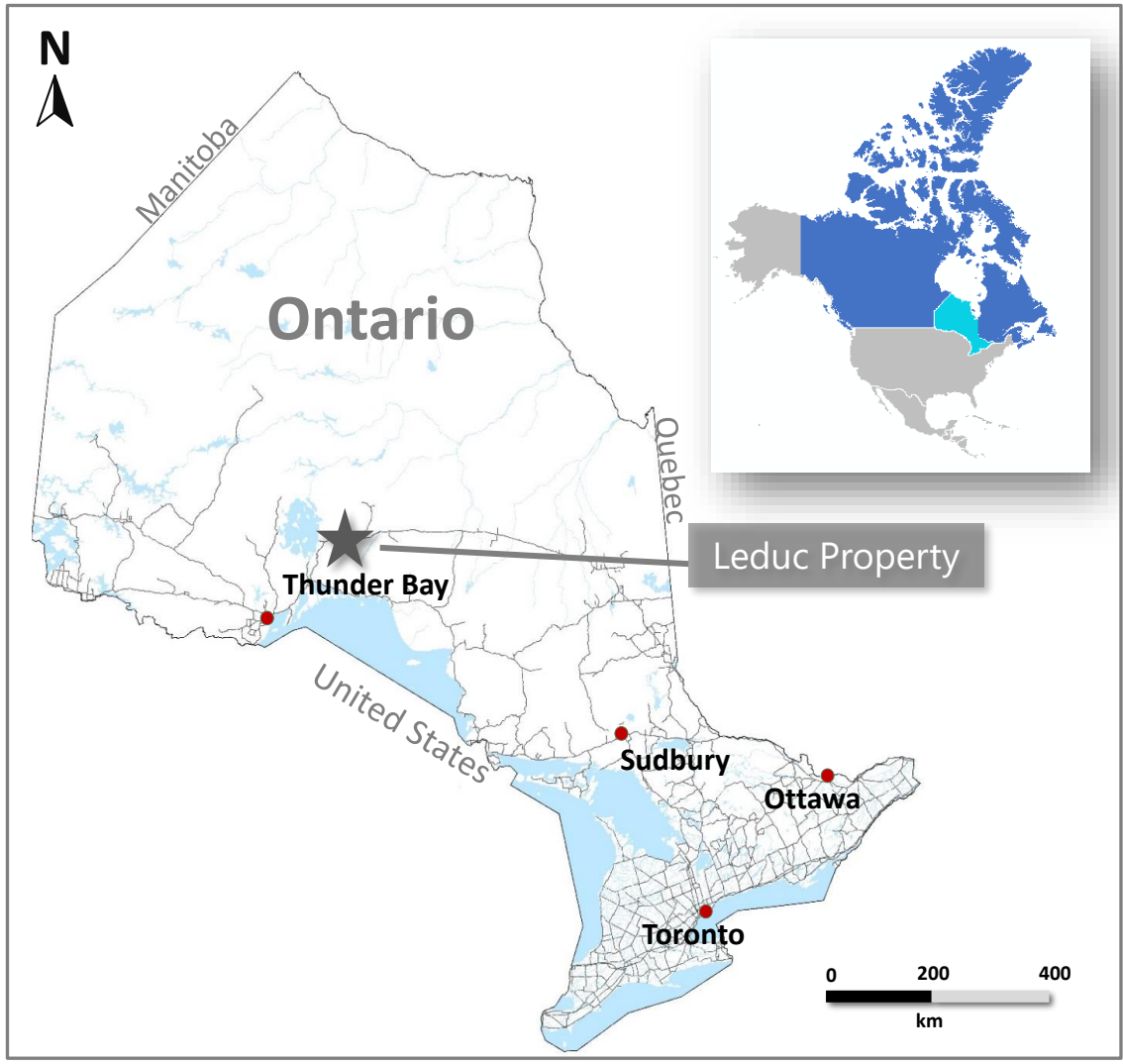
Geraldton, Ontario

Property Summary

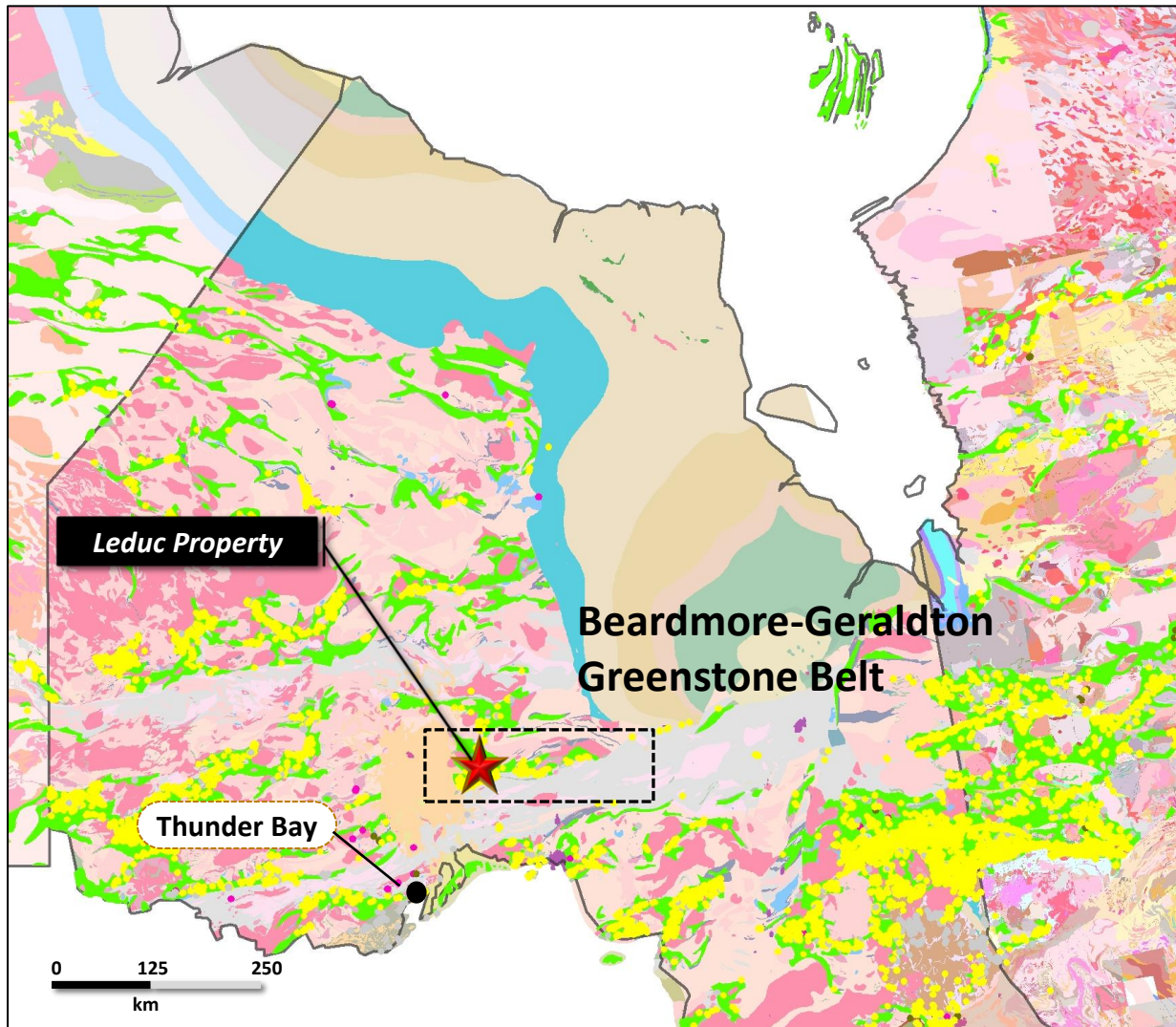


- The Leduc Property consists of 114 mining cells covering 2,290 hectares.
- The property located in the Beardmore-Geraldton Gold Camp which has historic production of 4.1 million ounces of gold
- The Centerra-Premier Gold Mines is developing the 2.3M oz. Au deposit in Geraldton as part of a large 70Mt open pit deposit.
- The Leduc Property lies along a key sedimentary-mafic volcanic belt that hosts numerous gold workings and mineral occurrences
- The Beardmore-Geraldton Gold Camp is known for its banded iron formation hosted gold deposits and the Leduc Property has reported similar high-grade gold mineralization in banded iron formation
- The magnetic signature of the Leduc Property is similar in intensity and geometry to those that host the majority of mineral occurrences and past producers
- The property has excellent access and nearby infrastructure

Regional Location



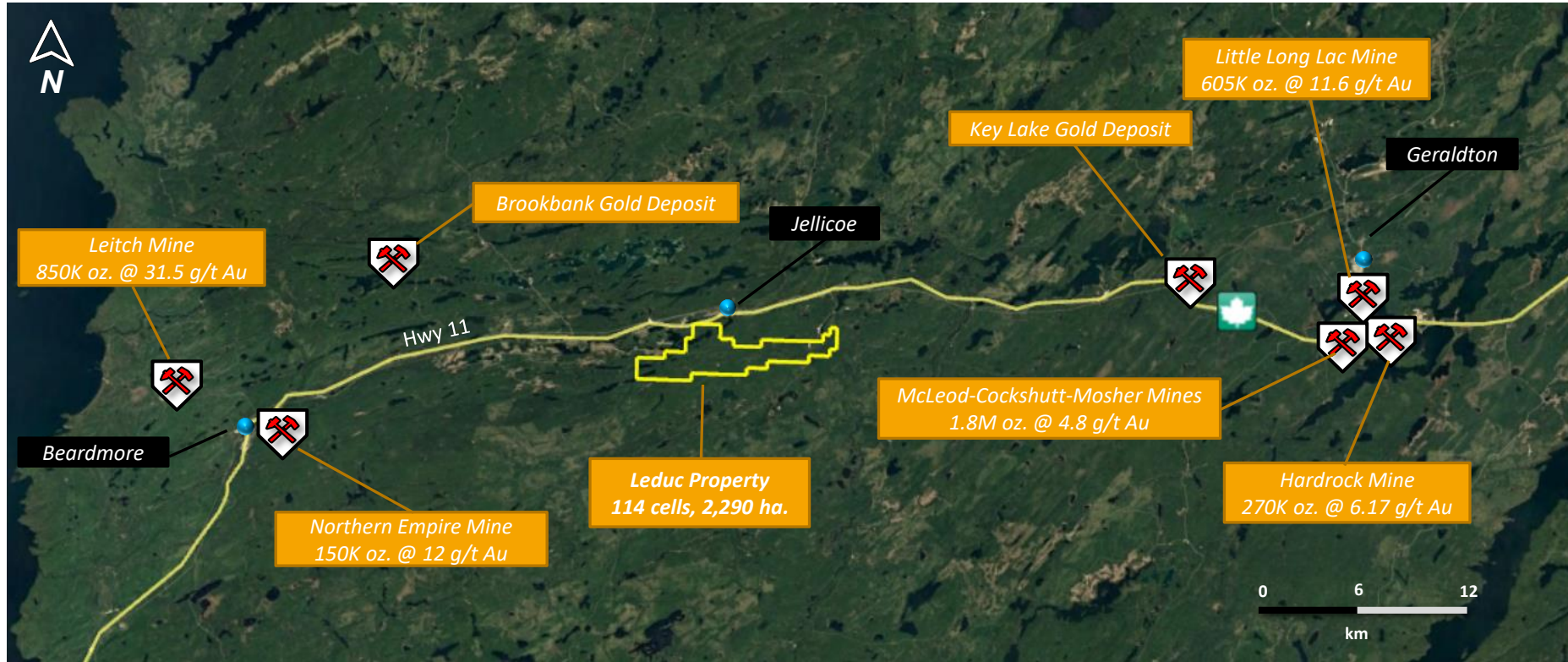
Ontario Greenstone Belts Precious Metals



- The Leduc Property is situated within the Beardmore-Geraldton Greenstone Belt with historic production of 4.1 Moz. Of note is the Centerra/Premier 50-50 joint venture in Geraldton scheduled for production for 2.3Moz.

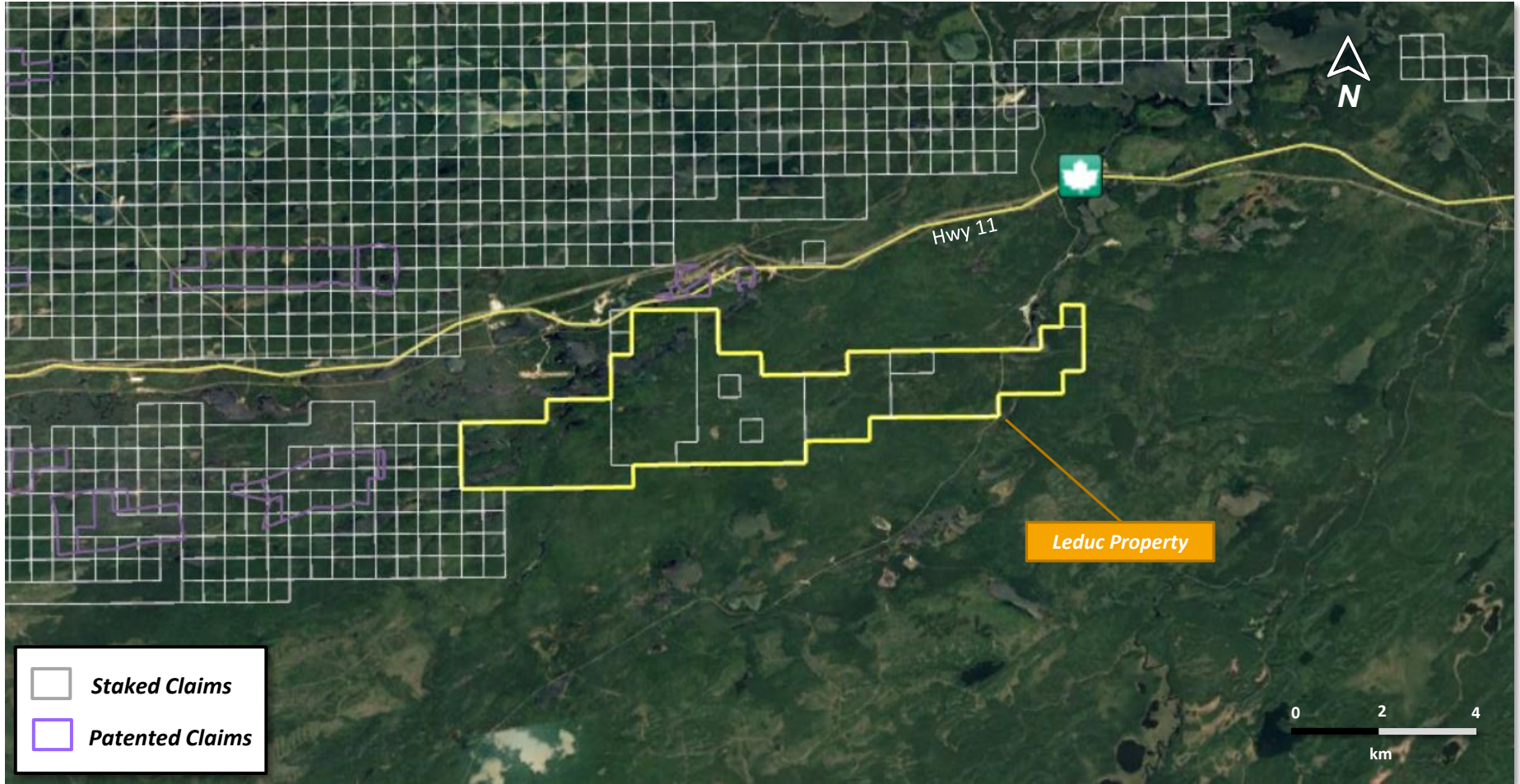
- Precious Metal Occurrences of Ontario/Quebec

Regional Location, Access and Historic Mines

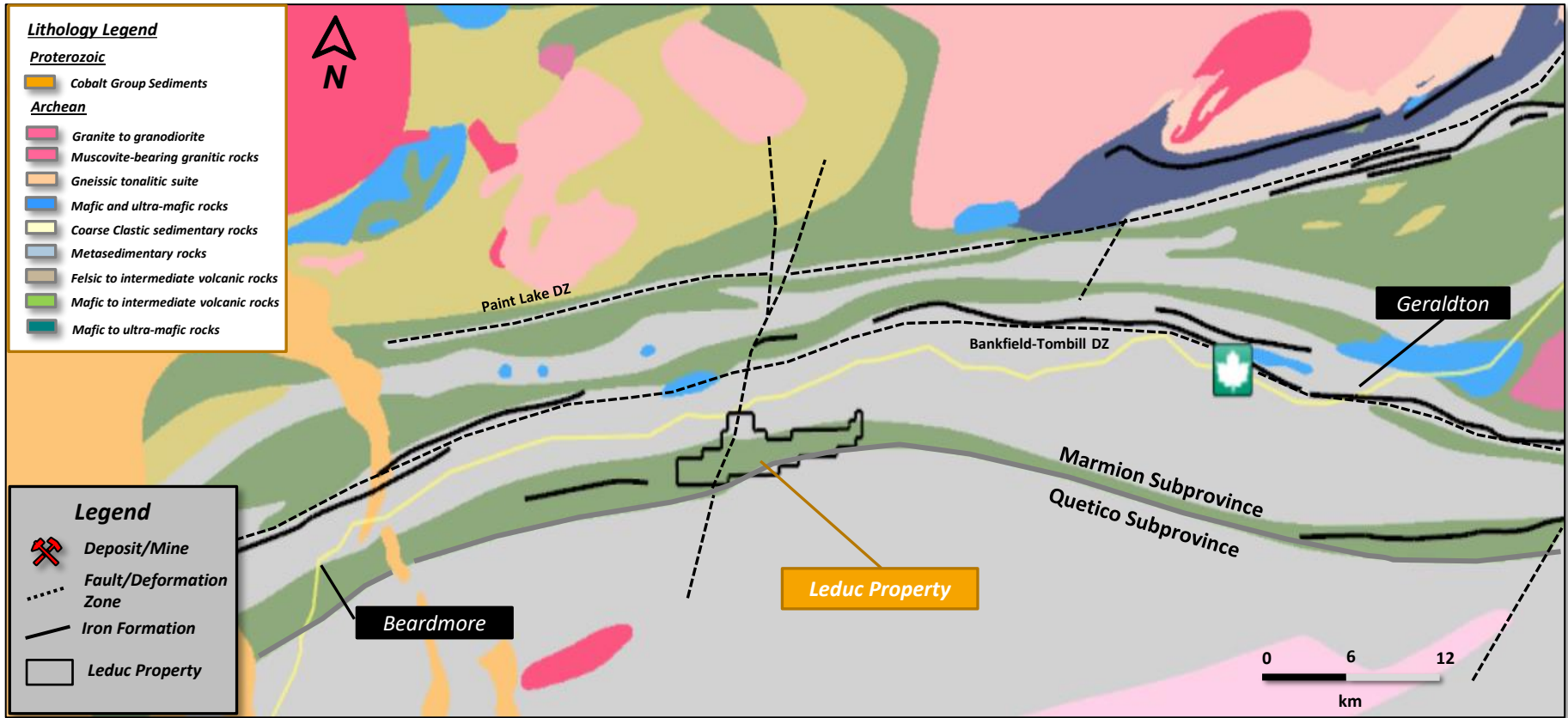


- Excellent road access, power lines and nearby infrastructure

Local Claim Fabric

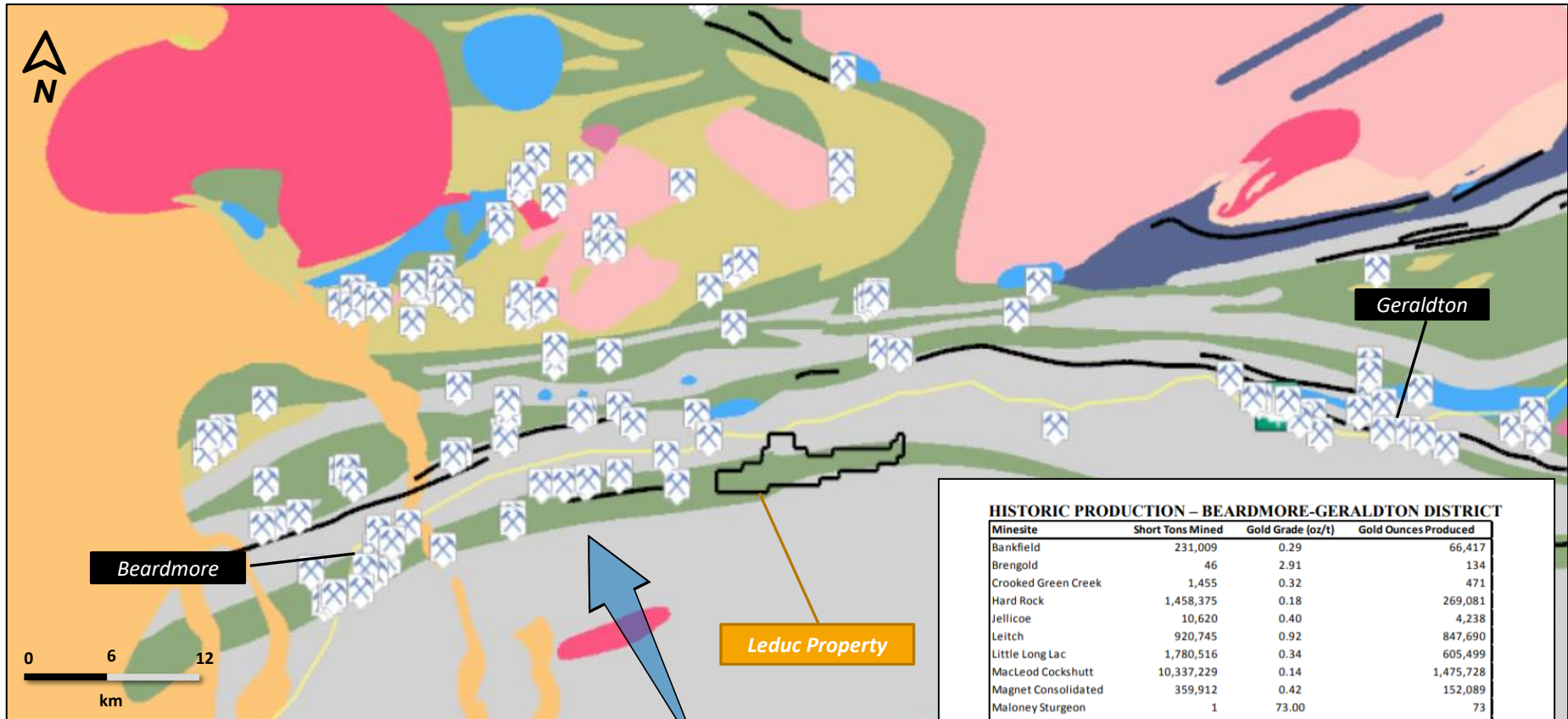


Regional Geology



➤ The Leduc Property lies just north of the Quetico-Marmion Subprovince Boundary. The property contains iron formation, an important host to the gold deposits of the Beardmore-Geraldton Gold Camp. A north trending fault through the property intersecting east-west stratigraphy provides excellent traps for gold mineralization.

Historical Production of the Beardmore-Geraldton Gold Camp

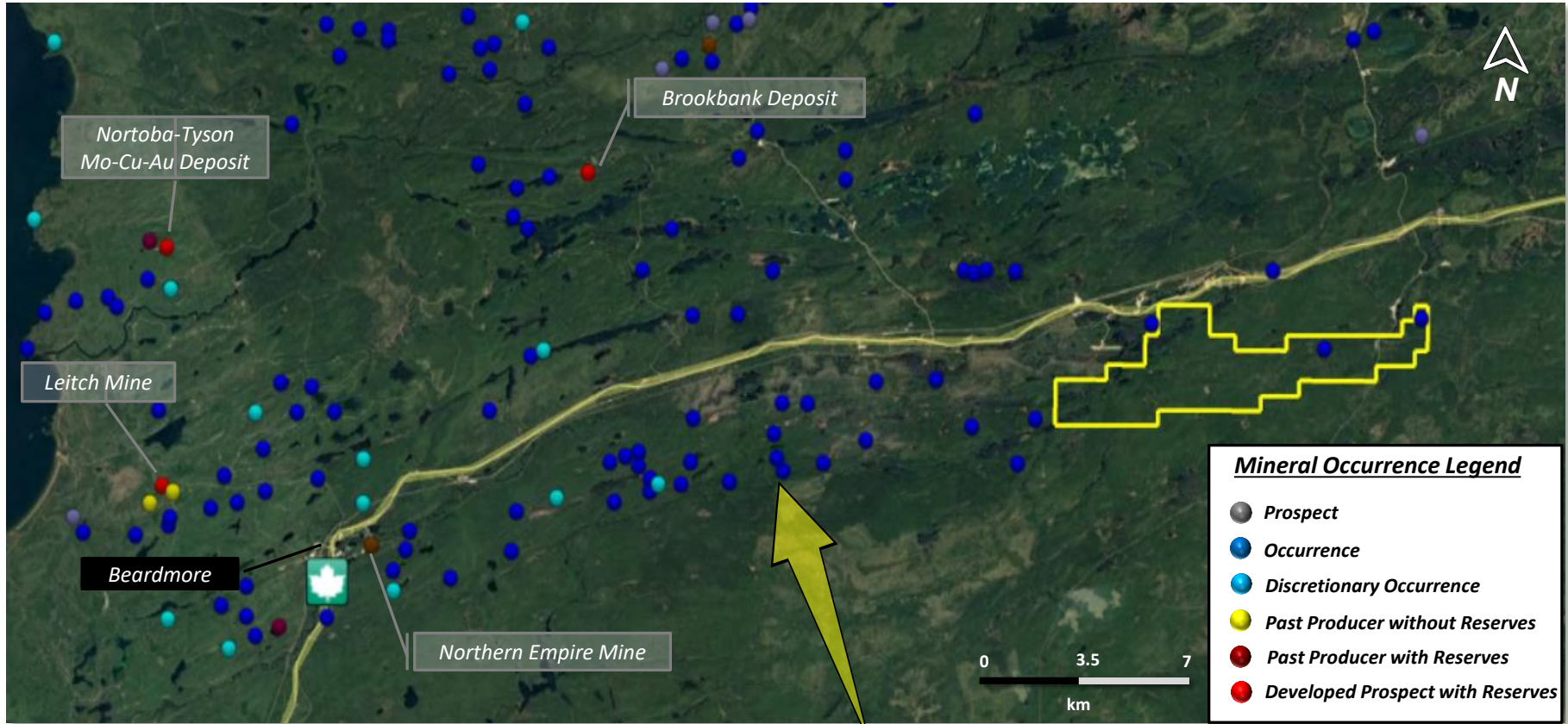


➤ The Leduc Property lies within an historic producing belt of stratigraphy yet has seen little exploration

HISTORIC PRODUCTION – BEARDMORE-GERALDTON DISTRICT

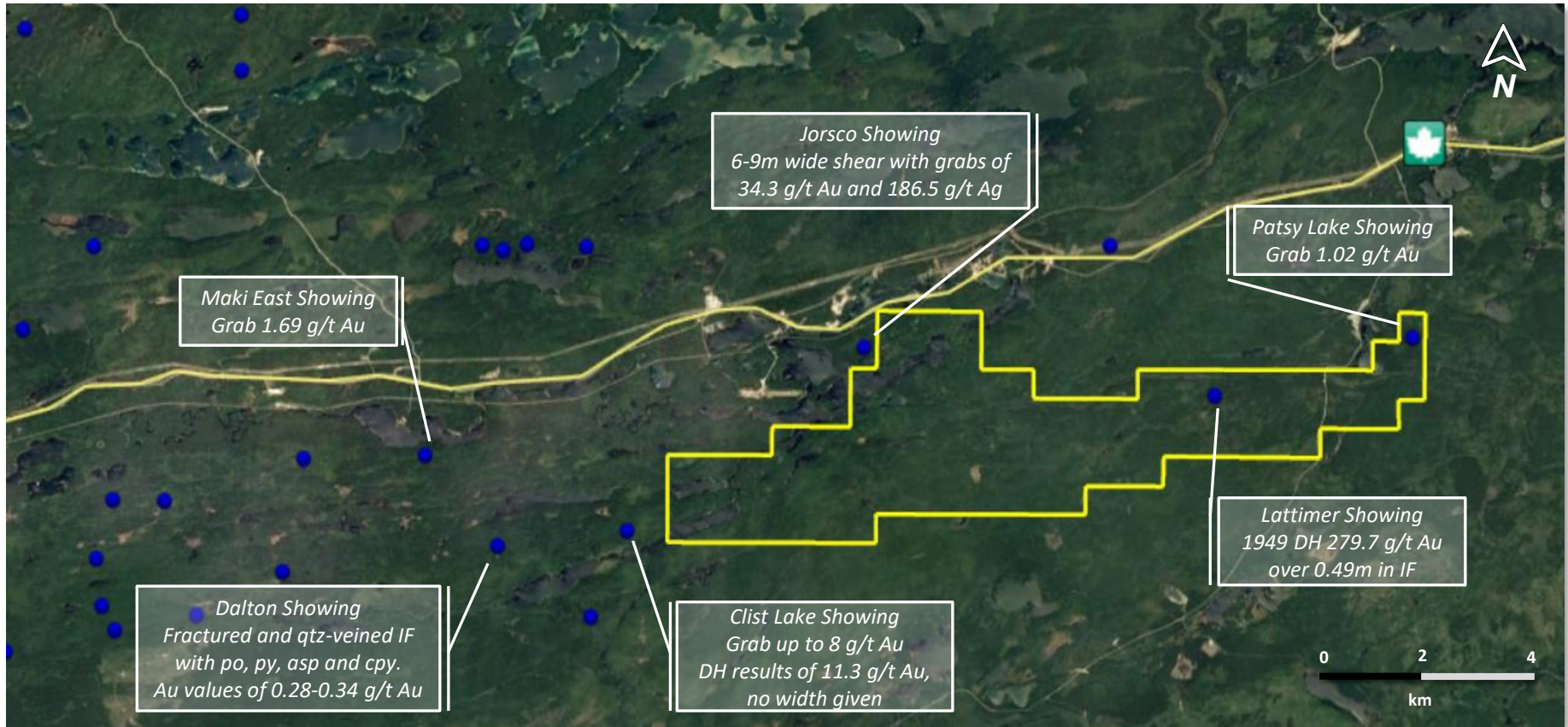
Minesite	Short Tons Mined	Gold Grade (oz/t)	Gold Ounces Produced
Bankfield	231,009	0.29	66,417
Brengold	46	2.91	134
Crooked Green Creek	1,455	0.32	471
Hard Rock	1,458,375	0.18	269,081
Jellicoe	10,620	0.40	4,238
Leitch	920,745	0.92	847,690
Little Long Lac	1,780,516	0.34	605,499
MacLeod Cockshutt	10,337,229	0.14	1,475,728
Magnet Consolidated	359,912	0.42	152,089
Maloney Sturgeon	1	73.00	73
Maylac	1,518	0.52	792
Mosher	2,710,657	0.12	330,265
Northern Empire	425,866	0.35	149,493
Orphan	3,525	0.70	2,460
Sand River	157,870	0.32	50,065
Sturgeon River	141,123	0.52	73,438
Talmora	6,634	0.21	1,417
Tashota	51,200	0.24	12,356
Theresa	26,120	0.18	4,785
Tombill	190,622	0.36	69,120
TOTAL PRODUCTION	18,815,043	0.22	4,115,611

Regional Mineral Occurrences and Deposits



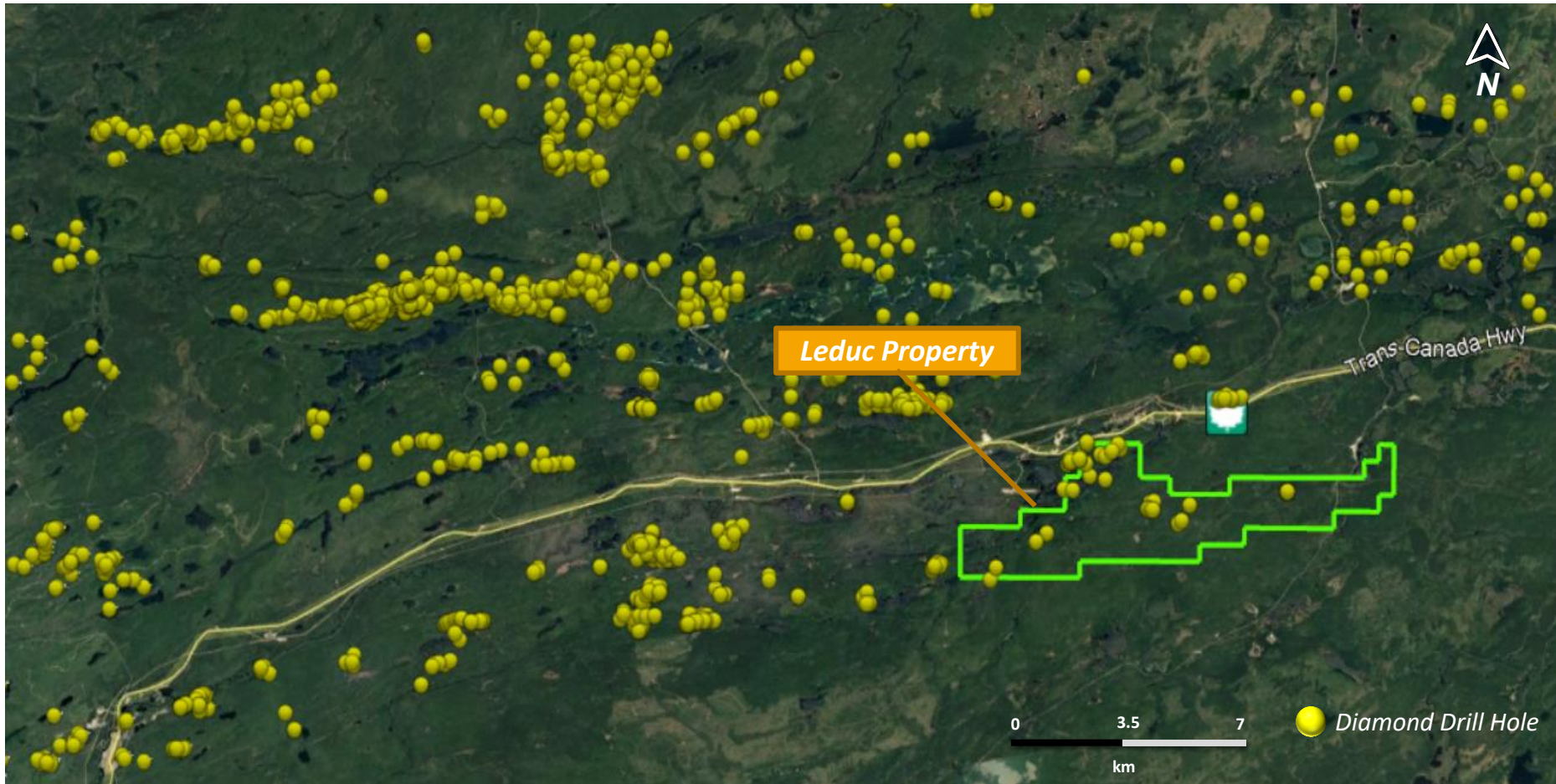
➤ The Leduc Property lies along a belt hosting numerous gold occurrences.

Local Mineral Occurrences



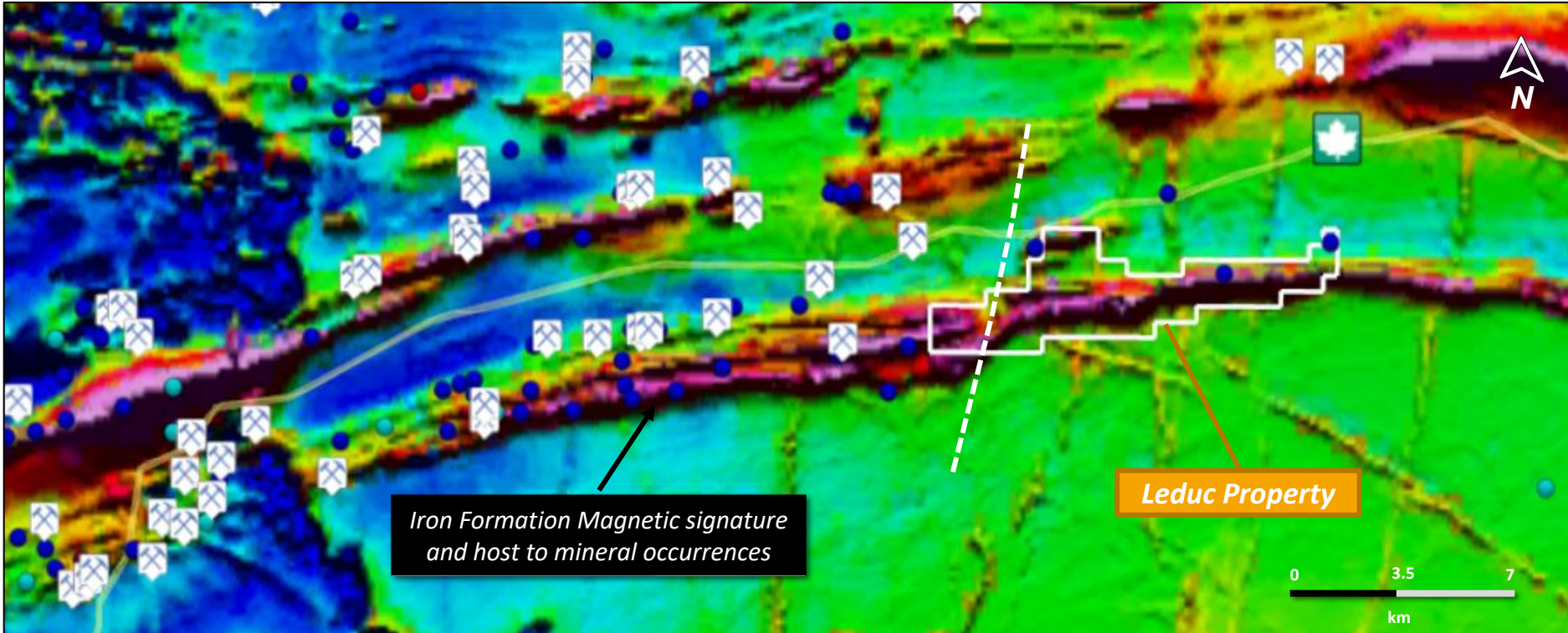
- Local mineral occurrences are significant. Reports of gold mineralization associated with fractured and quartz veined iron formation, sulphide replacement of magnetite and grunerite alteration. These are signature indications of the Banded Iron Formation Gold Deposit Model common to the Beardmore-Geraldton gold camp.

Historical Drilling



- Compared to other regions of Beardmore gold camp, the Leduc property has seen little drilling.

Regional Total Magnetic Intensity



- Mineral occurrences, former mines and workings in the Beardmore gold camp are associated with a linear high magnetic signatures which also bisect the Leduc Property. These high magnetic signatures are iron formations. The intersection of the north-trending with the iron formation will be a key target of high merit for exploration.

Structural Setting of BIF Hosted Gold Deposits

- The location of the ore zones are strongly influenced by the competency contrasts between host rock and BIF
- BIF-hosted gold zones are the product of several structurally and stratigraphically controlled phases of gold mineralization (or remobilization) associated with various generations of Archean to Proterozoic deformation zones
- The knife edge boundary between barren and gold-bearing BIF can be easily mean the difference between hit and miss in exploration. Sulphidation of magnetite and anomalous gold values are indications of a gold bearing hydrothermal system.

